

# Roeterseiland Campus

MARCH 2017



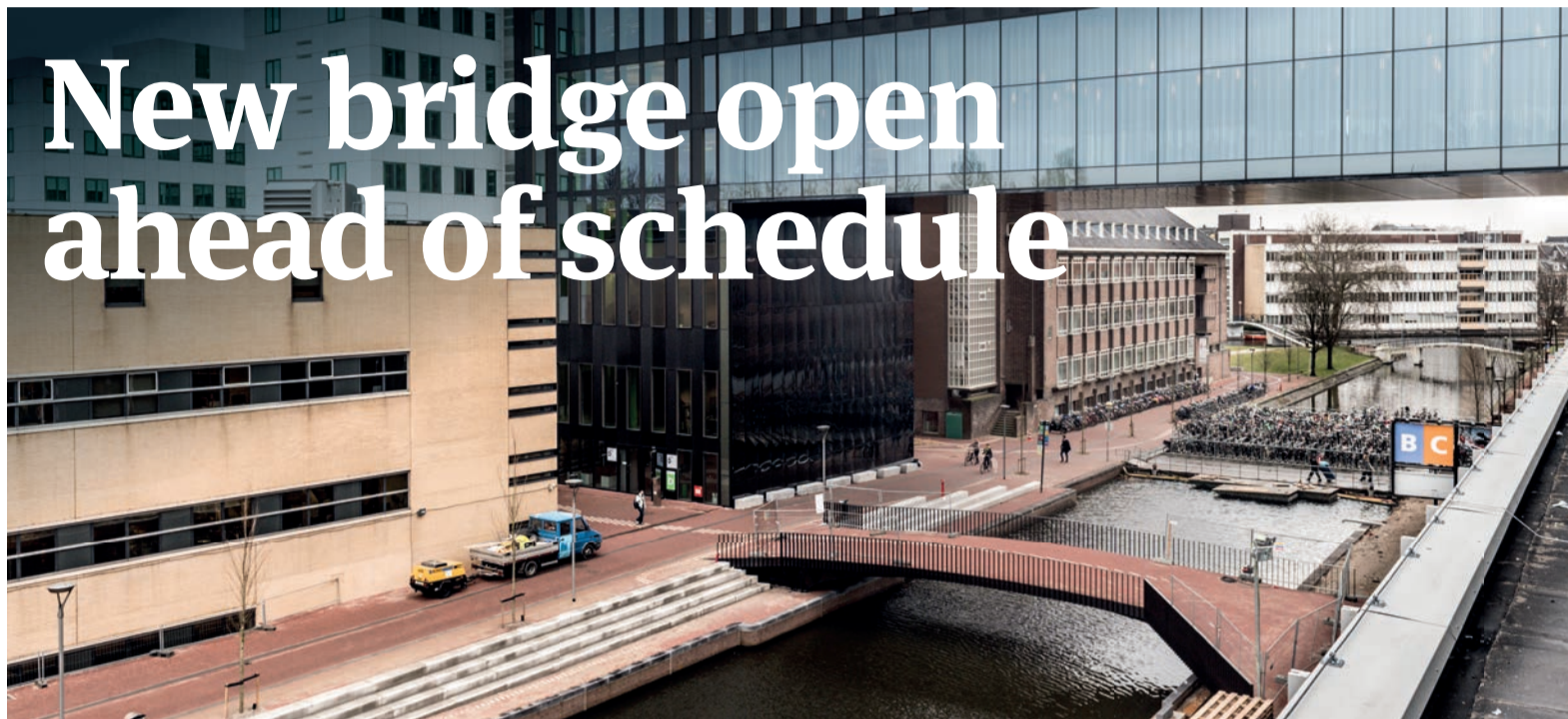
**'Students often seem to be in a world of their own!'**  
p. 2



**Make your voice heard on campus**  
p. 3



**Food feedback**  
p. 4



## New bridge open ahead of schedule

Do you have to cross the bicycle pontoons from B/C to E? If so, then as of the end of March, you can also make use of the newly built bridge over the Nieuwe Achtergracht, which connects the northern and southern halves of the Roeterseiland Campus.

'Work is in full swing on the south quay of the Nieuwe Achtergracht, although the staircase to the current B/C entrance is getting in the way. We are therefore installing an L-shaped staircase that connects to the bridge', says Arcadis project leader Ivo Kielenstijn.

### Postage stamp

'This will remove all obstacles on the south quay and allow us to continue our work safely', explains Real Estate

**'This will remove all obstacles on the south quay.'**

Eric Slotboom

Development project manager Eric Slotboom. 'We must first replace the cables and pipelines under the B/C staircase on the south quay. We will then lay the paving before installing the staircases, lighting and trees on the part of the quay leading to

the Roetersstraat. This will match the work done on the other side of the canal. Building A must also be prepared for use and we will have to share the south quay with the contracting firm TBI.' It will be a major challenge to work with large machines in such a small area – 'about the size of a postage stamp' according to Ivo – while lectures are conducted as normal all around them. 'We must do everything we can to ensure the inconvenience to students, employees and residents is kept to an absolute minimum.'

### Flexibility

'Thanks to the close collaboration between Arcadis and TBI, we can use the new bridge earlier than expected. This is a great

result that required considerable flexibility from all parties', explains Eric. In the weekend of 25-26 March, the staircase to B/C will be rotated. On Saturday morning, the additional construction components will be transported to the site and the staircase landing will be reused. Ivo: 'We expect to finish within a day, but if necessary, we can use the Sunday to perfect the finer details.' In accordance with the plans, Building A will be ready for use and the south quay will be completed by the end of June. 'From the start of the new academic year, there will be a central main entrance for Buildings A, B and C on the ground floor of Building A, unifying the buildings beautifully', says Eric.

### Further information

Once all construction work on the Roeterseiland campus is complete, it will accommodate the Faculty of Economics and Business, the Faculty of Social and Behavioural Sciences and the Faculty of Law. The facility will be an open urban campus with modern study facilities, research labs and catering facilities.

For the latest news on the ongoing construction work, planning schedule or background information, see [campus.uva.nl/roeterseiland](http://campus.uva.nl/roeterseiland) [@roeterseiland](https://twitter.com/roeterseiland)

### CONSTRUCTION WORK

## Schedule for 2017

- End of March** Adjustment of staircase to the B/C entrance
- March/April** Roofing work on tower E1
- April** Separate entrance to PPLE College
- April/May** Design of outdoor area on the south quay underneath the B/C staircase
- May/June** Design of south quay building site for Building A
- 30 June** Building A ready for use
- 29 July** Removal of temporary staircase to B/C entrance
- 31 July** Entrance hall to Buildings A/B/C ready for use
- August** Relocation of the Faculty of Law to Building A

## Technical masterstroke

As of the end of March, an extremely slimline bridge over the Nieuwe Achtergracht will connect the northern and southern sections of the Roeterseiland Campus. 'It's a technical masterstroke and a really beautiful landmark for the region', says Arcadis project manager Jos van Berlo, who gave us a glimpse behind the scenes of the construction project.



2 February 2017: Orientation day for 120 new Master's and pre-Master's students of the Graduate School of Communication.

It was an extremely complex process. 'The preparation was incredibly intricate. So much so that in comparison, the eventual assembly and completion was a piece of cake!' The bridge is largely made of steel and was constructed in separate sections. The meticulously customised design of the bridge required months of painstaking engineering, calculations and measurements at a specialist factory in Schijndel. 'There, it was constructed for the first time to verify the measurements before being disassembled again.' The separate sections of the bridge were then transported to Amsterdam at night via trailers of over 30 metres in length. 'This required specialist transport and involved all manner of permits

and exemptions from the RDW (National Vehicle and Driving Licence Registration Authority), the Municipality of Amsterdam and the GVB (Municipal Transport Authority).' The preparation and the foundations of the bridge took nearly six months to complete, yet the actual construction on site took just over a

month.' The only thing missing is the benches, which will be installed before the summer. The paving, lighting and trees have already been installed on the north quay, and work is in full swing to put in place the same amenities on the south quay (for more information, see the article and schedule above).

### Facts about the bridge

- The firm working on the bridge is AHMM Architects, based in London.
- The separate sections of the bridge are held together by over 3 km of high-quality welding.
- Boats of up to 2.15 metres can sail under the bridge.
- The bridge is 26.5 metres long and 6.5 metres wide, extending out to a breadth of 17 metres on the south side.
- The steel framework of the bridge weighs 60 tonnes, which is equivalent to around 60 medium-sized cars.

## The 1018 art project needs you!



Do you study, work or live on the Roeters-eiland Campus? If so, why not have photographer Maria Heijndael immortalise you in her unique exhibition 'The Face of 1018'? Maria is very interested in the people in the area. 'It's a real shame that nobody knows their neighbours anymore and no one says hello in the street.' She seeks to change this by creating 1018 photographic portraits of people living in the 1018 postcode area. 'The public photography days really brought the people in the neighbourhood together. Some of them are helping me with the project, and everyone is getting to know each other.' The project will be concluded with a huge exhibition later this year. 'In 1018 locations throughout the streets and passageways of the city centre's eastern region, you will find 1018 portraits of well-known and unknown members of the community together with their stories. They're all such lovely people!'

Maria will be conducting photography sessions on Tuesday, 21 March from 10:00-15:00 in De Brug (4th floor, Building B/C) and Friday, 21 April from 10:00-15:00 in the hall of Building E.

If you want to know more, visit [hetgezichtvan1018.nl](http://hetgezichtvan1018.nl) or just show up on the day!

## Spring cleaning



The sun is shining and the birds are singing, so let's go outside!

And the lawns, quays, benches and patio restaurants on the Roeterseiland Campus make it the perfect place to do exactly that! The UvA does everything it possibly can to keep the campus looking attractive and clean. We'd like your help to keep our campus neat and tidy, for example, by keeping dogs on a leash and preventing them from digging in the turfed areas. If you notice any cleanliness issues in the public areas, please inform the Service Desk on 020-5257575 or via [servicedesk-fs@uva.nl](mailto:servicedesk-fs@uva.nl).

## Lost your wallet?



Forgotten your phone charger? Have you lost something on campus?

If so, check first at the building's reception and/or send an e-mail to [servicedesk-fs@uva.nl](mailto:servicedesk-fs@uva.nl).

# Executive Board moves to Roeterseiland Campus



'It's a great pleasure to move into the heart of a campus, in amongst our students and staff members. We received a warm welcome and immediately felt at home!'

From left to right:  
Geert ten Dam, Kees van Ast, Karen Maex

**It's difficult to experience campus life first-hand when confined to the Maagdenhuis on the Spui. 'For this reason, the Executive Board of the UvA moved to the Roeterseiland Campus at the end of 2016', explains Arthur Cramer, manager of the relocation project within the Real Estate Development Department.**

The Executive Board was given a spot on the sixth floor of Building D on the Nieuwe Achtergracht. 'The executive staff now mingle with students and staff members in the corridors, lift and bicycle parking facility, which helps promote dialogue and break down barriers between the board and the rest of the academic community. The Executive Board also retains a hot desk in the Maagdenhuis, with meetings being held both there and on the

campus. The executive officers now also have the same furniture as everyone else on the Roeterseiland Campus.'

### Relocations

Mariana de Visser, coordinator of Student Services on the Roeterseiland Campus, believes it is important that the Executive Board comes into contact with students, lecturers and support staff every day. 'No matter how small it is, all contact with the

academic community is important as it more closely involves the Executive Board with the education at the UvA.' And she doesn't at all mind that part of Student Services has had to relocate. 'It'd have been nice to have had more time, but we managed to make the very best of it! Our consultation hours and workshops are now held on the first floor of Building C, which is a more central location at the campus and easier for students to get to. That definitely makes a difference!' Child Development and Education also moved from Building D to Building E, bringing them closer to their colleagues. To save extra space, the Executive Board was given a place on the sixth floor of Building D alongside the Faculty Office.

## 'Road safety is paramount'

**Marius Boes is a traffic regulator in Building A on the Roetersstraat. Amongst other issues, he is responsible for ensuring the safe passage of the construction vehicles and freight transport on site.**

'It's a job I greatly enjoy. Road safety is paramount and I ensure it via activities such as monitoring compliance with the loading and unloading ban at the beginning and end of the school day at the nearby Boekman School. I also try to keep the site as pleasant and peaceful as possible, e.g. by ensuring no whistling and cat-calling from the building sites. It's a very pleasant job, and I talk to everyone on campus. However, students do seem to be in a world of their own sometimes! From time to time I even have to jump in front of cyclists to protect them from a reversing vehicle that they failed to spot.'



Marius Boes

# UPDATED MAP

UNIVERSITY OF AMSTERDAM

## Roeterseiland Campus

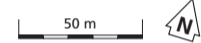
Situation as of March 2017

- Faculty of Economics and Business (FEB) **E**
- Amsterdam Business School **M**
- Amsterdam School of Economics **E**
- CREA **I**
- Faculty of Social and Behavioural Sciences (FMG) **B, C, D, L, G**
- Faculty of Law (FdR) (Aug 2017) **A**
- Library Learning Centre (LLC) **H**
- Politics, Psychology, Law & Economics (PPLE) **E**
- Spinoza Centre LAB **L**

Construction site – closed to the public

- Student Service Desk
- Classrooms
- Study places
- Library
- Main entrance
- Entrance (not accessible for PRMs)
- PRM entrance
- Restaurant
- Kiosk
- Catering
- Bicycle parking facility
- PRM parking space

@roeterseiland  
campus.uva.nl



## Roetersbos

The Roetersbos construction site barrier on the Roetersstraat will be disassembled in Mid-May/June. Any children that helped us with the project and would like to continue to care for 'their' pet at home can request this via Anne van den Eijnden (Omgevingsmanager-roeterseiland@uva.nl).

## Communication research

- satisfied
- dissatisfied

According to a survey commissioned by the UvA and conducted by the Office of Research, Information and Statistics, residents and business owners in and around the Roeterseiland Campus are happy with the communication regarding campus developments.

The figures were as follows:

- 7.7 out of 10 for the Neighbourhood News about the construction work, with 80% of respondents familiar with the publication.
- 7.7 for this newsletter, with public awareness of 62%.
- 8.4 for the neighbourhood meetings, of which a third of respondents were aware.
- The website (campus.uva.nl) received a score of 7.6 but only 17% of respondents had heard of it.

Visit [campus.uva.nl/roeterseiland](http://campus.uva.nl/roeterseiland) to keep up to date with the latest news.

## An alluring entrance...

The PPLE College (Politics, Psychology, Law and Economics) will be given its own separate entrance in a prominent position beside the Student Service Desk in the central hall of REC E. The entrance is scheduled for completion in mid-April.

'Having our own entrance will really help the image of PPLE College', says Nils Mevius, project manager at PPLE College. Three years after its establishment, this new interdisciplinary programme now has 450 registered students. The first 50 students are due to graduate at the end of May. 'We have our very own learning and working environment and all of the facilities we use are in a single location. It's a logical step for us to have our own entrance and we're happy that the moment has finally arrived.'

### Schedule

Renzo Wittermans, project manager within the Real Estate Development Department, is responsible for the project. 'Until now, PPLE College had a shared tradesman's entrance, which is simply not appropriate for a programme with international allure. The new entrance will have a unique individual style that is perfectly suited to the programme. We expect to have received all of the necessary permits by the start of April, enabling the contractor to get started right away.'

### Unique

PPLE College is a unique, small-scale and intensive programme at the UvA. It is taught in English, making it particularly attractive to international students (currently accounting for 60% of the students on the programme). According to Nils, these students are adventurous, ambitious and extremely perseverant. 'They fought their way through a stringent selection process: 800 people applied for the programme in 2016, of which just 192 were accepted.'

**Would you like more information on PPLE College?**

If so, you can find this via [info-pple@uva.nl](mailto:info-pple@uva.nl) and [pple.uva.nl](http://pple.uva.nl)

## Campus Study Association Consultative Committee: make your voice heard!

In September, Tjapko van Noort (26) was appointed as chair of the Campus Study Association Consultative Committee on the Roeterseiland Campus.

'As chairman, it's my job to ensure everyone's interests are promoted. To do this, I consult with as many people as possible in order to realise the best possible solution.' In addition to being a recent Tax Law graduate, Tjapko is currently studying International Business Administration and also holds a Bachelor's degree in Psychobiology. He describes the campus consultations as 'a great learning experience'.

### Discussion

'The consultations, which are held every eight weeks and involve members of the faculty staff, Facility Services, ICT and the student body, provide Real Estate Development with a great deal of valuable information about the construction work on campus. It also enables dialogue on many issues, such as bicycle parking capacity. Recently, more detailed explanation was given of the Integral Roeterseiland



Tjapko van Noort

Campus Programme, relating to the further development of the campus.'

### Input

According to Tjapko, students' input is vital to the further development of the campus as 'they know what is going on and what students need'.

**Want to know more about the campus consultations?** If so, send an e-mail to [tjapko.vannoort@studentenraad.nl](mailto:tjapko.vannoort@studentenraad.nl). Tjapko van Noort is also a member of the Student Council of the Faculty of Law and a representative to the Central Student Council.

#### ACTIVITIES ON THE ROETERSEILAND CAMPUS:

- 18 maart Bachelordag
- 18 March: Bachelor's Day
- 22, 29 and 31 March: Study Choice Workshop
- 29 June: Summer Festival

#### ROOM FOR DISCUSSION (HALL, BUILDING E):

- 28 March, 13:00-14:00: Walk of Hope with Sri M (English)
- 5 April, 13:00-14:00: Jan Terlouw
- 13 April, 13:00-14:00: Keynes & Economic History with Robert Skidelsky (English)

roomfordiscussion.com

#### ACTIVITIES AT THE ROETERSSTRAAT ATHENEUM:

- 25 March, 15:00: Debutant's Day
- 28 March, 17:30: ZUCA Portuguese Literature Afternoon
- 1 April, 15:00: Tim de Gier interviews David Pefko
- 25 March-2 April: Book Week

#### CREA ACTIVITIES:

- 7-8 April: In De Diamantfabriek (formerly Amsterdams Studenten Festival) ([indediamantfabriek.nl](http://indediamantfabriek.nl))
- 29 April: Plankgasten Open Mic Event [crea.uva.nl](http://crea.uva.nl)

#### CAMPUS DEVELOPMENT

The new Roeterseiland Campus will see the University of Amsterdam bring together related academic disciplines in order to promote collaboration between students, staff and researchers.

With modern buildings, study facilities and research laboratories, the campus will serve as a meeting place for socially engaged individuals and organisations, the university and broader society. It's innovative and groundbreaking: an intellectual hub in the city of Amsterdam.

#### PUBLICATION DETAILS

The Roeterseiland Campus newspaper is a publication of UvA Real Estate Development. The newspaper is distributed among local residents, entrepreneurs, students and employees at the Roeterseiland Campus.

**Editors:**  
UvA Real Estate Development  
Tel.: 020 - 525 2443  
email: [huisvestingsontwikkeling@uva.nl](mailto:huisvestingsontwikkeling@uva.nl)

**Text:** Frederieke Genevace  
**Photography:** Gerrit Serné, Sarah de Jong (p. 1 group photo)  
**'Cycling' infographic:** merel-bakker.nl  
**Map:** Bourne Design  
**Layout:** Designyard  
**Printing:** OBT Opmeer  
[campus.uva.nl/roeterseiland](http://campus.uva.nl/roeterseiland)

#### CYCLING ON CAMPUS

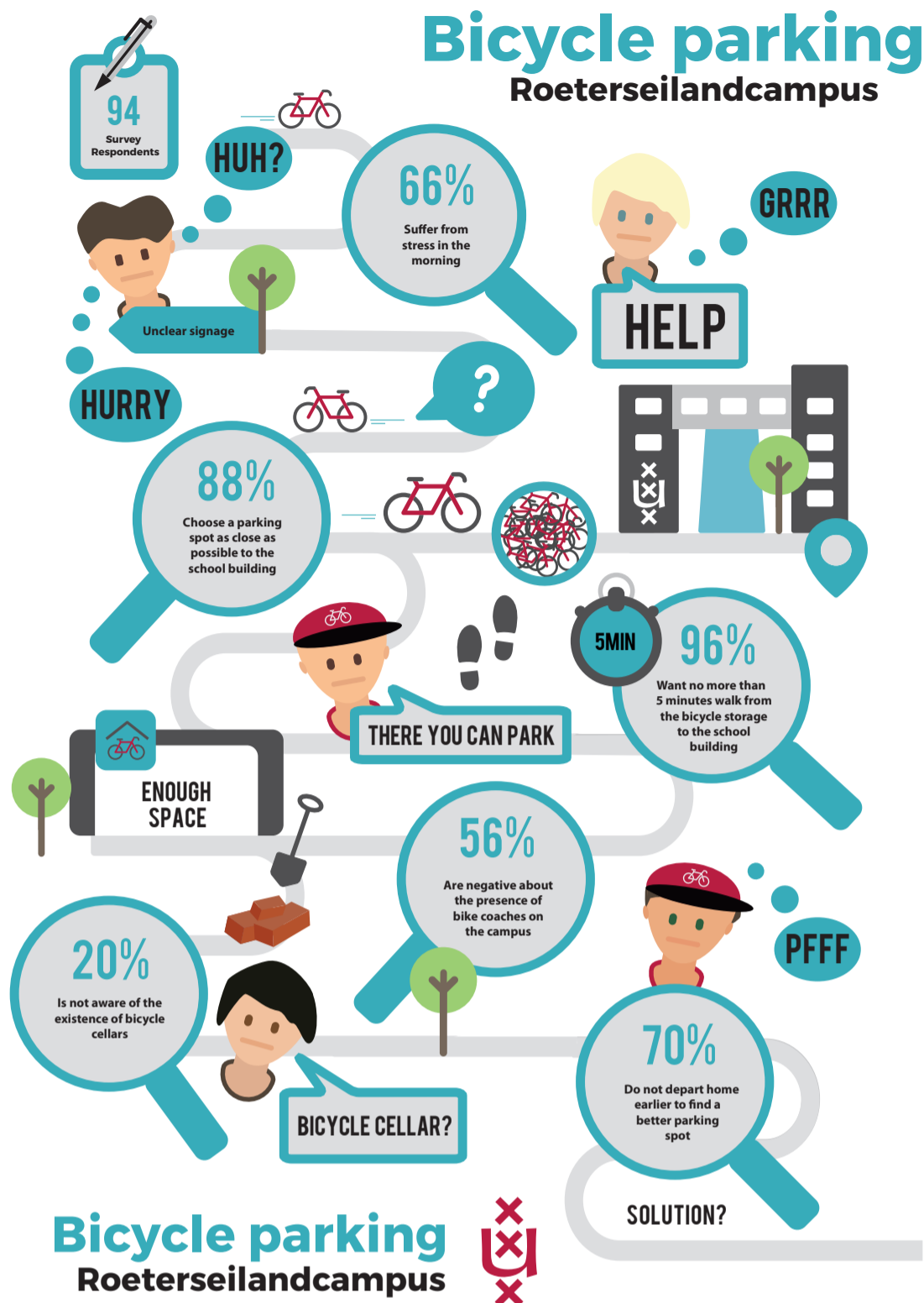
## AUAS: helping our cyclists to park properly

Many students and staff members come to the campus by bike. That's good for so many reasons, but why do cyclists find it so hard to park properly?

Upon request by UvA Real Estate Development, sixteen students of Communication and Multimedia Design at the AUAS investigated both the roots of the problem and ways to entice cyclists to park appropriately. This resulted in five creative ideas. The winning idea – a themed bicycle garage – was submitted by Kelvin van Amstel, Evita Zethof and Tim Maas. It involves using projectors to transform the garage into cityscapes such as Paris or New York, with bike attendants welcoming you with a friendly 'Bonjour' and a croissant! Last November, the winning team pitched this idea to the UvA's Urban Cycling Institute as an innovative way to solve the bicycle-parking problem.

Other ideas submitted by AUAS students include the 'Wake Up With Willem' app, which helps relieve stress by supporting you during your morning routine, the valet bicycle parking scheme 'Pedal Parking', contributions to charity every time someone parks their bike or moped properly, and a bonus-points scheme via the UvApp.

We are currently investigating whether the themed garage idea can be rolled out at the Roeterseiland Campus.



#### CATERING

## Food feedback

From 1 January, a huge variety of sustainable and healthy food and drink will be available on the UvA and AUAS campuses, from fresh pasta to sumptuous Asian dishes. Nearly 5,000 students and staff members helped us develop our new catering concept by taking part in a survey on culinary and interior-design preferences. We spoke to Guido Meijer, project leader at UvA/AUAS Facility Services.

'The first steps have already been taken. We are currently replacing the coffee and vending machines offering cold drinks and snacks. We are also transforming many of the restaurants and coffee corners on varying degrees based in part on the results of the survey. The styles will differ from campus to campus, but the Urban Jungle and Urban Industrial styles are very popular at the moment. Other places will be transformed in the summer,



such as the new Grand Café in Building A. Our philosophy is "something for everyone!"

#### Positive reactions and feedback

Since we started this initiative on 1 January, a lot of positive feedback has been received via social media and the enjoytoday.amsterdam online platform, as well as many questions and useful suggestions. Guido: 'So far, students and staff members have been requesting a larger range of warm meals. Many people are also unaware of just how many culinary options are open to them, even for those on tight budgets. Via Enjoy Today, we can keep in contact with users, share information, listen to people's experiences and anticipate the needs of students, employees and other users.'

#### Stylish

According to Guido, local business owners and stylish bars and restaurants can play

a key role in boosting the allure of campuses. 'These are taking the place of the traditional self-service buffets. The former student restaurants now have attractive and multifunctional seating areas – which we call "bases" – where you can eat, drink, study and relax.'

#### New concept

A single main contractor – Cormet Enjoy the Good Life – will hire a diverse range of local catering entrepreneurs on a short or longer-term basis. Cormet provides the facilities: a large external food hub (central production centre, ed.) outside the campus and the set-up of the kiosks on location. 'Every caterer will run his or her own kiosk without having to make any major investment', says Guido. 'The caterers will rotate from campus to campus and if desired, Cormet can change the range of catering on offer based on online input via Enjoy Today.'

## Banqueting webshop

Via the banqueting webshop, you can order catering for events such as meetings and lunches. In due course, the webshop will be further expanded to include more local caterers. Common rooms and study associations can request an account with a direct login via [uvafood@cormet.nl](mailto:uvafood@cormet.nl).

#### Opening hours of Building H catering facilities

Restaurant/Food Court  
Monday-Thursday: 08:30-19:00  
Friday: 08:30-18:00  
**De Krater**  
Monday and Tuesday: 08:00-23:00  
Wednesday-Friday: 08:00-00:00  
Saturday and Sunday: 09:00-16:00

#### Opening hours of Building B/C/D catering facilities

**Kiosk**  
Monday-Friday: 08:00-16:00  
**De Brug/Coffee Corner & Lunch Restaurant**  
Monday-Friday: 08:00-16:00